

BRUCE 布鲁斯

BRUCE 布鲁斯

400-8890-100
www.chinabruce.cn



扫一扫
关注布鲁斯
官方公众号

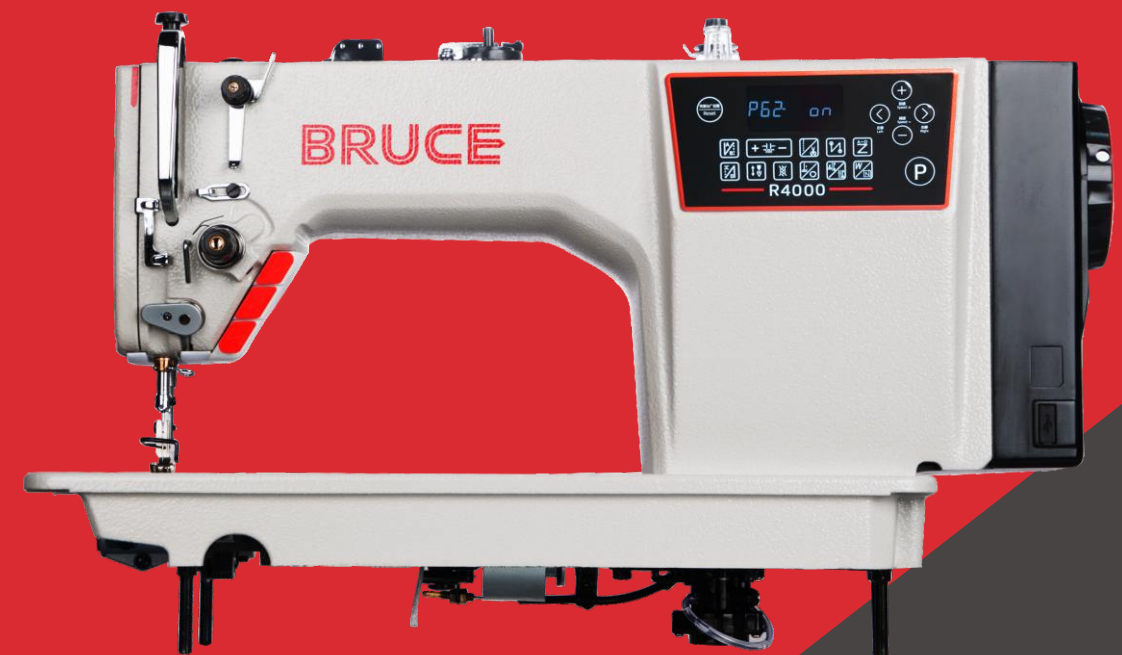


扫一扫
关注孝心缝慈善
基金会官方公众号

R4000

高速步进电脑平缝机

High Speed Computerized Lockstitch Machine
With Electronic Control Stitch Length System



怕跳针 · 怕断线 · 就用布鲁斯
NO BREAK · NO SKIP

台州市布鲁斯缝制设备有限公司
TaiZhou Bruce Sewing Machine Co.,Ltd.
浙江省台州市椒江区东海大道东段1008号2号楼
No.2 building No.1008 Eastern Section East Sea Road Jiaojiang
District Taizhou, Zhejiang.

怕跳针 · 怕断线 · 就用布鲁斯
NO BREAK · NO SKIP

BRC- R4000

品名：高速步进电脑平缝机
High Speed Computerized Lockstitch Machine With Electronic Control Stitch Length System

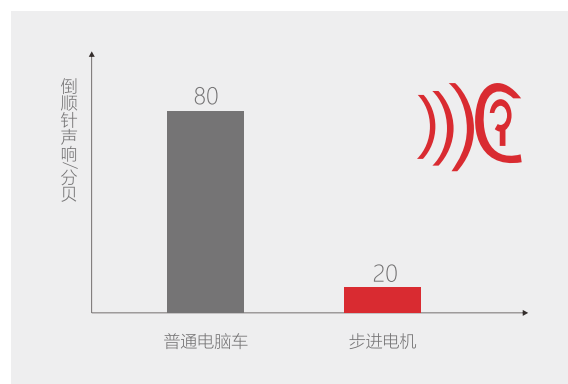


针距精准，锁定不费力

High precision stitch

通过步进电机控制针距，针距可精确到0.1mm，且可设置密码，锁定针距大小。

Stitch length can reach 0.1mm controlled by stepping motor. Stitch length adjustment function can be locked just in case operator's mis-operation.

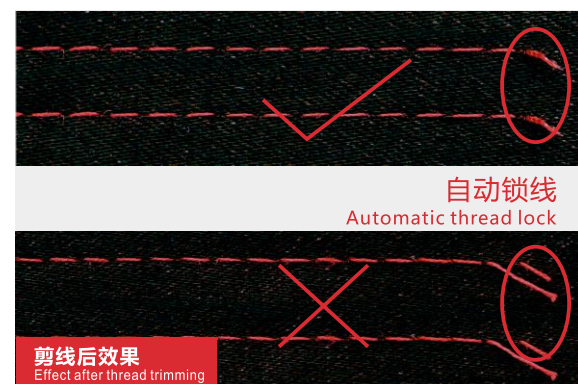


倒缝无声、告别滴答声

Noiseless reverse sewing, quiet and comfortable

科学设计，通过步进电机控制倒缝结构，实现倒缝无声，给你安静舒适的工作环境。

Stepping motor controlled reverse sewing structure by scientific design achieves noiseless reverse sewing, which enables a quiet and comfortable environment



自动锁线
Automatic thread lock

剪线后效果
Effect after thread trimming

短线头，无需修剪

Short thread remaining, no need to trim again

缝纫结束后不用修剪线头，少一次剪线头的动作，少一次剪坏布料风险，省时省工省钱。

No need to trim thread remaining again, which avoids trimming risks and save labour, time and money.

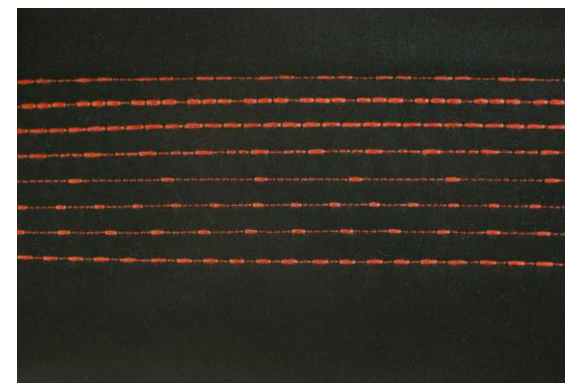


缝薄过梗，轻松便捷

For light and heavy materials, Stitch beautiful

优化挑线杆和送料结构，进一步扩大缝纫范围，适用于衬衫、蕾丝、羽绒服、牛仔等厚薄面料的缝纫。

For light and heavy materials: Optimized take-up structure And needle bar stroke, Enlarge sewing range, Its easy to sew From 2 layers mesh to 16 layers jeans



花样缝纫、时尚美观

variable stitches, fashionable and beautiful

可根据服装工艺要求，选择不同花样线迹缝纫，且可自行编辑所需花样，给你时尚美观的线迹。

Different sewing stitch is available based on different clothes requirements. And editable pattern enables more fashionable and beautiful stitches.



自动抬压脚，省力高效

Auto presser foot lifter, Save Energy, High efficiency

内置自动抬压脚，轻踩踏板就能快速抬起压脚，省力高效。

Built-inside presser foot lifter, Quick responding by pedal, Save energy, High efficiency



2倍大旋梭，大容量更高效

Double size big hook

一次绕线，缝纫更久，效率更高

One time winding, Longer sewing, higher efficiency.



技术参数 Specification

型号	针号	针距	针板	挑线杆	送料	薄料	中厚料	厚料	尺寸 (mm)	重量 (kg)
R4000-DQ	DB×1 11-18#	2	5	5-13	5000	√	√		690X295X550	39.5/45.5
R4000-DHQ-M	DB×1 11-18#	2	5	5-13	5000	√	√		690X295X550	39.5/45.5
R4000-DHQ	DP×5 18-21#	2	5	5-13	3500			√	690X295X550	39.5/45.5
R4000-DHQ-7	DP×5 18-21#	2	7	5-13	3500			√	690X295X550	39.5/45.5
R4000-DHLQ-7	DP×5 18-21#	2	7	5-13	3500			√	690X295X550	39.5/45.5
R4000-4DQ	DB×1 11-18#	2	5	5-13	5000	√	√		690X295X550	39.5/45.5
R4000-4DHQ-M	DB×1 11-18#	2	5	5-13	5000	√	√		690X295X550	39.5/45.5
R4000-4DHQ	DP×5 18-21#	2	5	5-13	3500			√	690X295X550	39.5/45.5
R4000-4DHQ-7	DP×5 18-21#	2	7	5-13	3500			√	690X295X550	39.5/45.5
R4000-4DHLQ-7	DP×5 18-21#	2	7	5-13	3500			√	690X295X550	39.5/45.5